

Laser Test Report

All indicator tests are made with specific requirements of customers.

Mode: MGL-V-532nm-10W-DA12202

Test Report

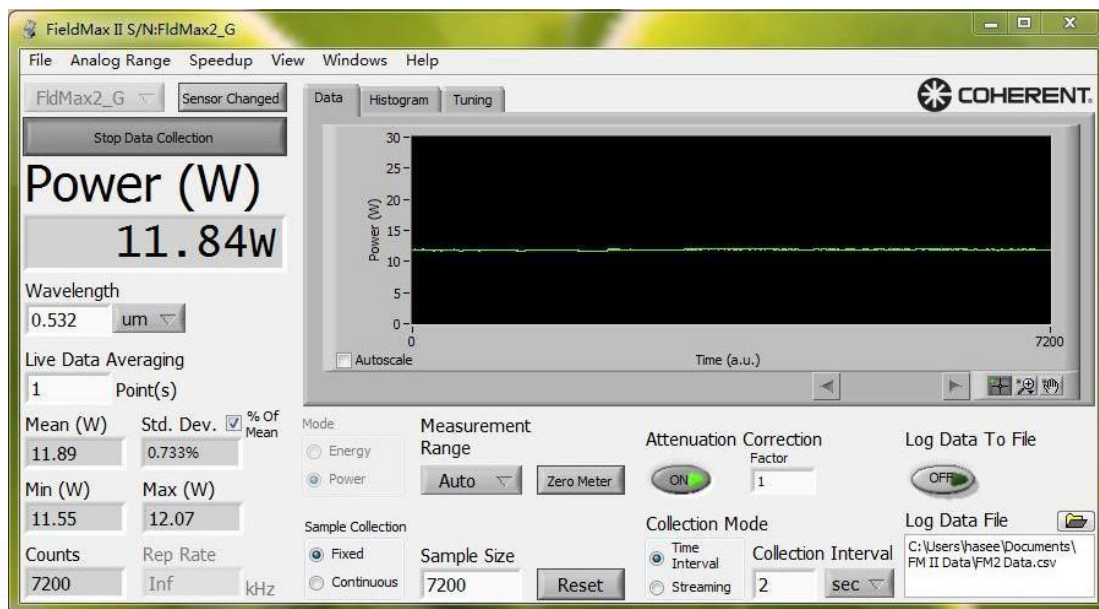
Test items	Test data	Note
Output Power	11.89W	图 1
Power stability	0.733%	图 1
Operating mode	CW	/
Transverse mode	TEM ₀₀	图 2
Beam diameter	~2mm	图 2
Beam divergence (Full)	~0.9mrad	/
Luminous height	93mm	/
Horizontal polarization ratio	>100:1	/
Operating temperature	10~35°C	/
M ²	1.17	图 3
Spectrum/Linewidth	532.153nm/83.5pm	图 4
P-I	/	图 5
Warm-up time	<10mins	/
Laser head size	200×137×112mm ³	/
Laser head weight	4.15kg	/
Power Supply	220V	/
Power supply model	PSU-Z-LED	/
Power supply size	330×321×137mm ³	/
Power weight	7.41kg	/
Modulation	TTL	/
Threshold current	1.3A	/

Tested by: T03

Test time: 2023-1-10

备注

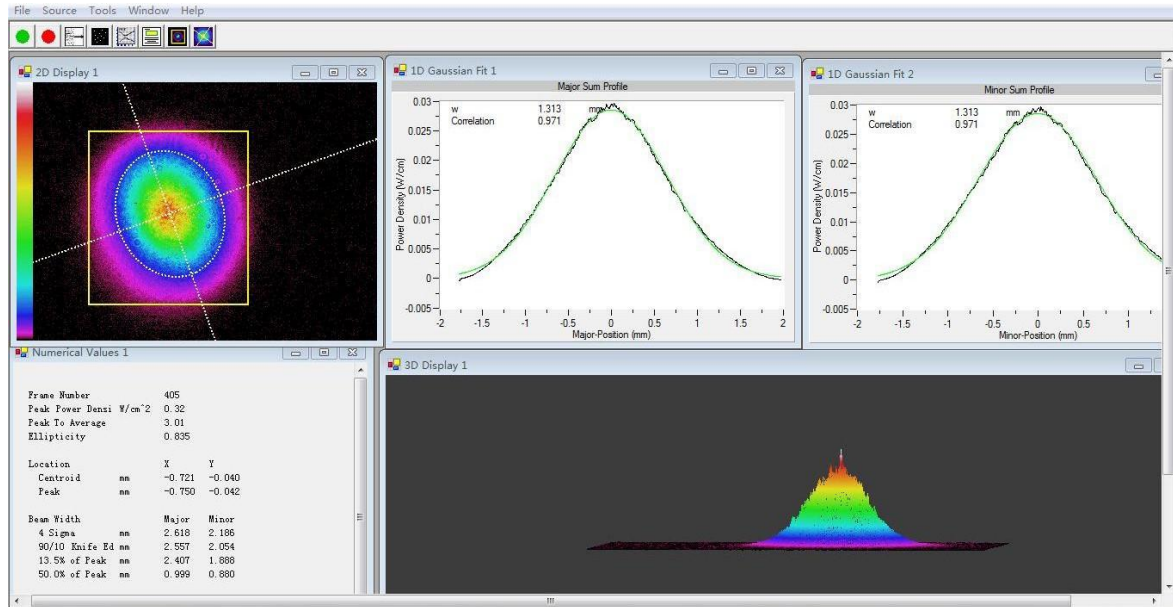
图 1. Detection of output power and power stability



使用 Coherent 功率计监测 4 小时的平均输出功率为 11.89W, 功率稳定性为 0.733%。

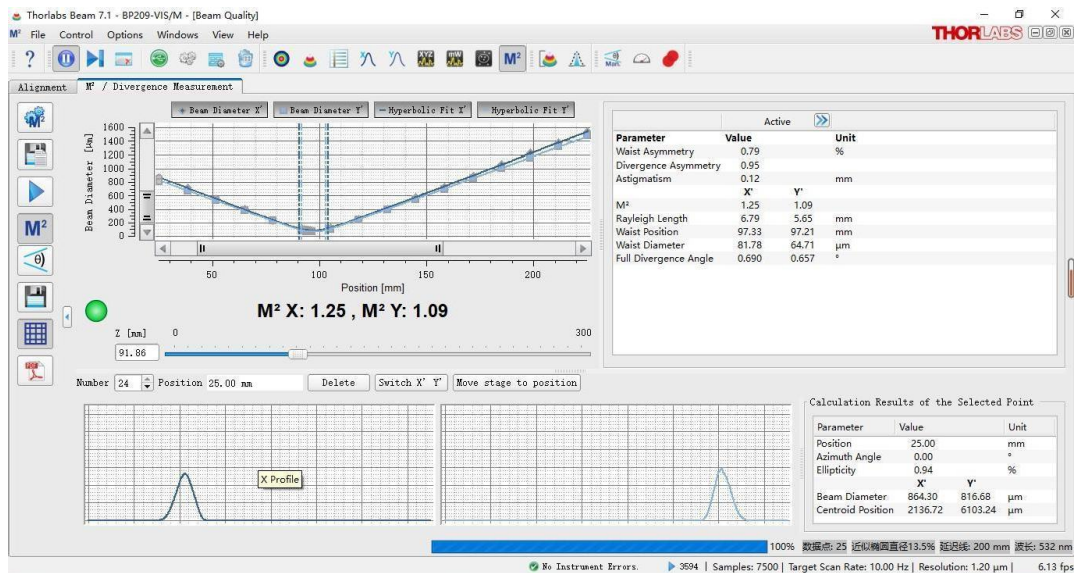
The average output power monitored by a Coherent power meter for 4 hours was 11.89W, and the power stability was 0.733%.

图 2. 光束轮廓检测 Beam Profile Detection



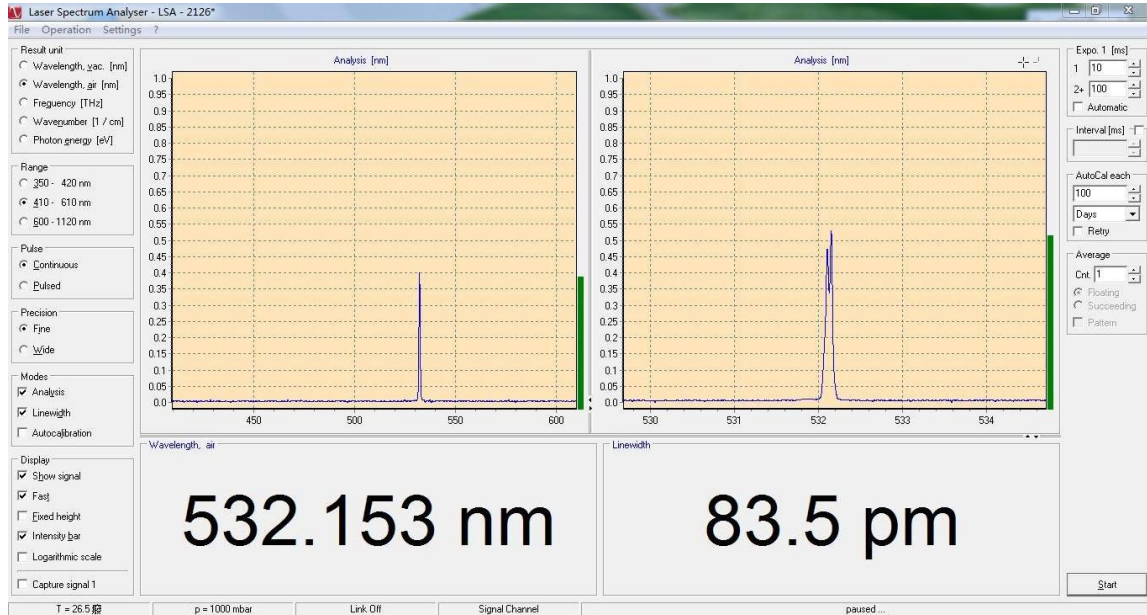
使用 OPHIR 光束轮廓分析仪检测光束轮廓
Detecting Beam Profiles Using the OPHIR Beam Profiler

图 3. M²



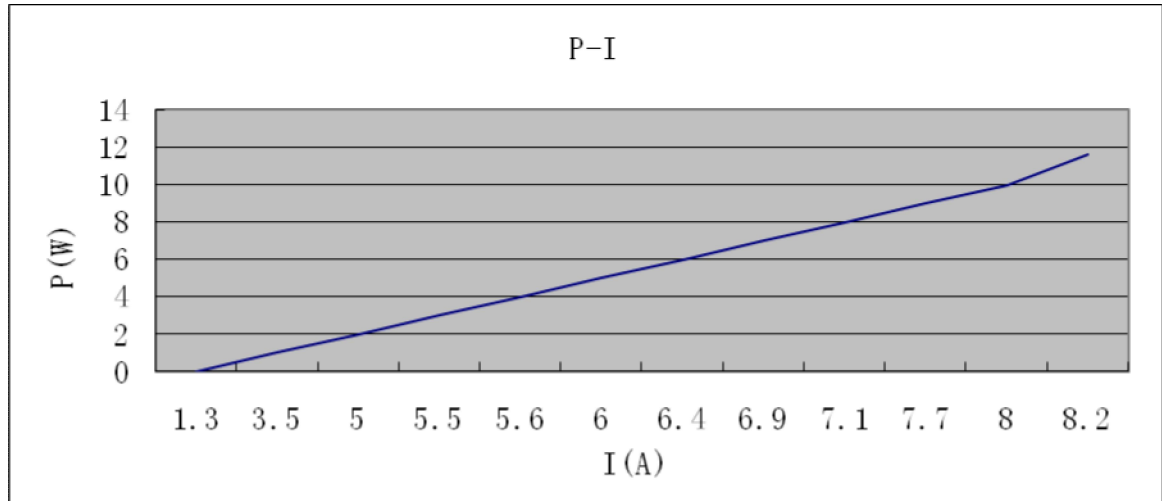
使用 M2 测试仪测得 M2 X:1.25, M2 Y:1.09
Measured with M2 tester M2 X:1.25, M2 Y:1.09

图 4. 光谱/线宽 Spectrum/Linewidth



使用波长计测得光谱/线宽为 532.153nm/83.5pm。
The spectrum/linewidth measured using a wavelength meter is
532.153nm/83.5pm。

图 5. P-I



I(A)	1.3	3.5	5.0	5.5	5.6	6.0	6.4	6.9	7.1	7.7	8.0	8.1	8.2
P(W)	0	1.0	2.0	3.0	4.0	5.0	6.0	7.0	8.0	9.0	10	11	11.63
%	18	46	65	70	72	76	81	87	89	95	98	99	100